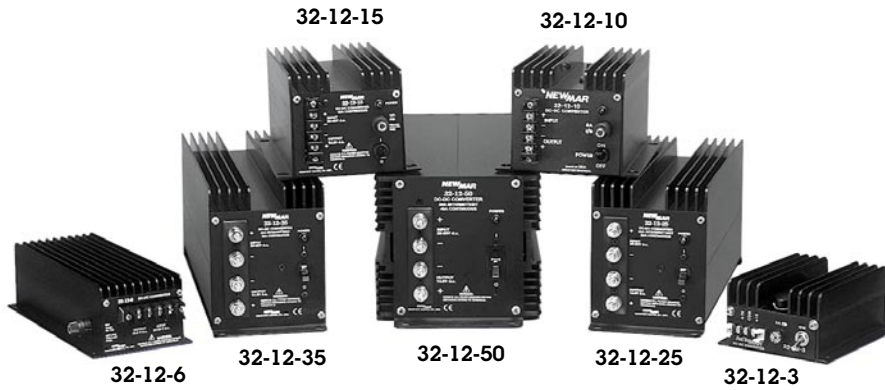


# DC-DC Converters – Standard Series



Convert 20-50 VDC to 12 or 24 VDC negative ground output for powering communication/navigation equipment, on negative ground systems. Ideal for powering voice and data transceivers in mobile applications.

- Excellent Regulation: Output voltage maintained within 1% under all line and load conditions within rating (except 3 amp models).
- Heat generated by semi-conductors is extracted and dissipated by large heat sink fins that maximize air contact for cool operation and long life of components.
- Polyurethane conformal coating on PC boards and corrosion-resistant anodized aluminum case with heavy duty shock mounts assure survival in hostile environments.
- Numerous converter and load protection circuits: Current limiting\*; automatic thermal shutdown; short circuit proof\*; reverse polarity and over voltage protection\*.  
\* Except 3 Amp. Model.

Model	Input Voltage	Output Voltage	Output Amps Intermittent	Output Amps Continuous	Case Size	Weight (Lbs.) (Kg.)
32-12-3	20-40	13.6	3	2	C-1	2 .9
32-24-3	32-40	24.5				
32-12-6	20-50	13.6	6	6	C-10	2.5 1.1
32-24-6	32-50	24.5				
32-12-10	20-50	13.6	10	10	C-2	4 1.8
32-24-10	32-50	24.5				
32-12-15	20-50	13.6	15	15	C-2	5 2.3
32-24-15	32-50	24.5				
32-12-25	20-50	13.6	25	20	C-3	7.5 3.4
32-24-25	32-50	24.5				
32-12-35	20-50	13.6	35	30	C-4	12 5.5
32-24-35	32-50	24.5				
32-12-50	20-50	13.6	50	40	C-5	16 7.3
32-24-50	32-50	24.5				

## Performance Specifications – Standard Series

**Output:** 13.6 VDC (internally adjustable 12.6-14.5) or 24.5 VDC (or specify)

**Ripple:** 150 mV P-P maximum

**Regulation:** 1% Line/Load (except 32-12-3/32-24-3)

**Duty Cycle Ratings** Intermittent - 20 minutes max on time, 20% duty.

Current limit set at approx. 105% of intermittent rating

Continuous - 24 hours, 100% duty

**Idle Current:** Less than 100 mA (including power "ON" light)

**Operating Temp:** 0-50° C, Derate Linearly From 100% @ 40° C To 50% @ 50° C

Thermal shutdown @ 70° C Case Temperature

**Switching Frequency:** 40 Khz\*

**Efficiency :** 85% - Typical.†

**Isolation – Output/ Chassis; Input/Chassis:** 250 VDC

**Certification :** Carries the CE mark

\*except 32-12-3 – Linear, Non-Switching

†except 32-12-3– 50% @ 24VDC Input

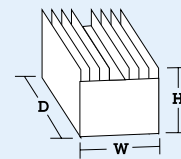
## Isolated and ISP Series Converters Available – contact factory

Features: reverse polarity protection; input fuse; output fuse; current limiting, short circuit proof out; automatic resetting thermal shutdown; input transient protection\*; high/low input voltage shutdown; polyurethane conformal coating on PC board; Power "ON" light; On/off switch; \*ISP Series only

## Options

- Operation as battery charger or parallel redundant operation\* – derate to continuous duty rating (contact factory)
- Extreme vibration mounting kit. (Information below)  
\*Except Model: 32-12-3A

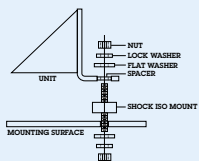
## Case Size



## Dimensions

	Inches			Centimeters		
	H	W	D	H	W	D
<b>C-1</b>	2.7	4.5	6.0	6.9	11.4	15.2
<b>C-2</b>	4.5	5.9	11.0	11.4	15.0	27.9
<b>C-3</b>	6.0	4.7	14.0	15.2	11.9	35.6
<b>C-4</b>	6.0	4.7	16.0	15.2	11.9	40.6
<b>C-5</b>	6.2	6.8	18.1	15.7	17.3	46.0
<b>C-10</b>	2.8	4.2	10.4	7.1	10.7	26.4

## Option: Extreme Vibration Mounting Kit



The Extreme Vibration Mounting Kit is available to protect NEWMAR power converters from the extreme stresses of shock and vibration when mounted on high-vibration vehicles.

The kit (pictured here) replaces the standard vibration kit

provided with the unit and fits into the unit's mounting flange to act as a "super shock absorber" for electronics in high-vibe applications. It is available to fit all NEWMAR units from 2 to 70 lbs. Specify KIT-L for units which weigh 2-15 lbs. and Kit-H for units which weigh 16-70 lbs.