

# Battery Chargers - ABC Series



ABC 12-25



ABC 12-8

## ABC Series

The ABC Series chargers have been in the Newmar line for 30 years. They utilize time tested SCR charging circuitry, individually sensing and regulating each of 2 isolated battery banks, allowing the user to leave the charger operating indefinitely, even under no-load conditions without fear of overcharging. These chargers are ideal for emergency and specialty vehicles which have an intermittent demand for battery power.

*(For battery systems which require high continuous output, see our Phase Three Chargers on pages 2-3)*

These chargers are housed in a rugged, black anodized aluminum, heat-sink case which extracts heat without introducing dust & moisture to the inside of the unit.

The rugged and reliable ABC charger is employed in hostile environments throughout the world; in emergency and specialty vehicles, mining equipment and off-road applications.

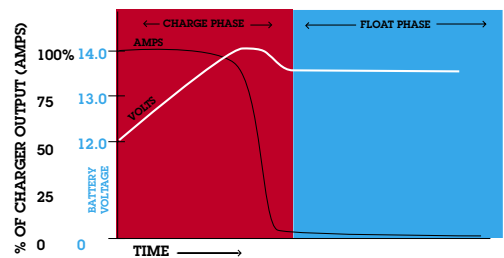
All ABC chargers feature a total output ammeter, on-off power switch, power "on" indicator light, 115/230 VAC input voltage selector switch, factory installed AC power cord with molded plug and shock-resistant rubber mounting grommets. Circuit boards are polyurethane conformal coated for corrosion resistance and all are protected against overheating by an automatically resetting thermal switch.

**Duty Cycle Ratings:** Rated Charging Output 20 min., derate to 50% for continuous output

**Operating Temperature:** 0-40°C

**Float Voltage:** 13.4 VDC

## Typical Charge Curves ABC Series



## Features

- Total output ammeter
- Dual independently regulated output banks
- On-off switch and power "on" indicator light
- Vibration absorbing mounting grommets
- Anodized aluminum case
- 115/230 VAC input selector switch
- Auto-reset thermal breaker
- Conformal coating of circuit board

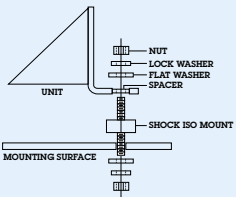
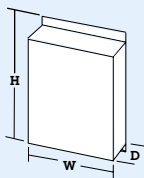
## Specifications

Model	Input		Output		
	Volts	Amps*	Volts	Banks	Amps
ABC 12-8	105-125 VAC or 210-250 VAC	1.5/.75	12	2	8
ABC 12-25	50-60Hz	5/2.5	12	2	25

\*@ Full Load

## Case Size

Model	Inches			Centimeters			Weight	
	H	W	D	H	W	D	(Lbs)	(Kg)
ABC 12-8	8.0	6.0	4.2	20.3	15.2	10.6	9	4.1
ABC 12-25	11.9	4.7	6.2	30.2	11.9	15.8	14	6.4



### Option: Extreme Vibration Mounting Kit

The Extreme Vibration Mounting Kit is available to protect NEWMAR battery chargers from the extreme stresses of shock and vibration when mounted on high-vibration emergency vehicles..

The kit (pictured here) fits into the unit's mounting flange to act as a "super shock absorber" for electronics in high-vibe applications. It is available to fit all NEWMAR units from 2 to 70 lbs. Specify KIT-L for units which weigh 2-15 lbs. and Kit-H for units which weigh 16-70 lbs.



DC Power Onboard - Emergency & Specialty Vehicles